

APACHE CENTRAL CENTER

TEMPE • ARIZONA



1328–1348 E. Apache Boulevard • Tempe, Arizona 85281

For further information, please contact:
 Michael A. Pollack
 (480) 888-0888

Size: 43,800 Square Feet
Zoning: C-2, City of Tempe
Traffic Counts: Apache Blvd: 28,623 cars/day • McClintock Dr: 36,720 cars/day
 (2008: City of Tempe)

Demographics:

(2009: Demographicsnow.com)

	1 mile radius	3 mile radius	5 mile radius
Population:	25,276	137,574	337,590
Households:	9,660	51,798	123,773
Median Household Income:	\$ 31,749	\$ 47,091	\$ 51,923
Median Age:	25.3	30.2	31.4

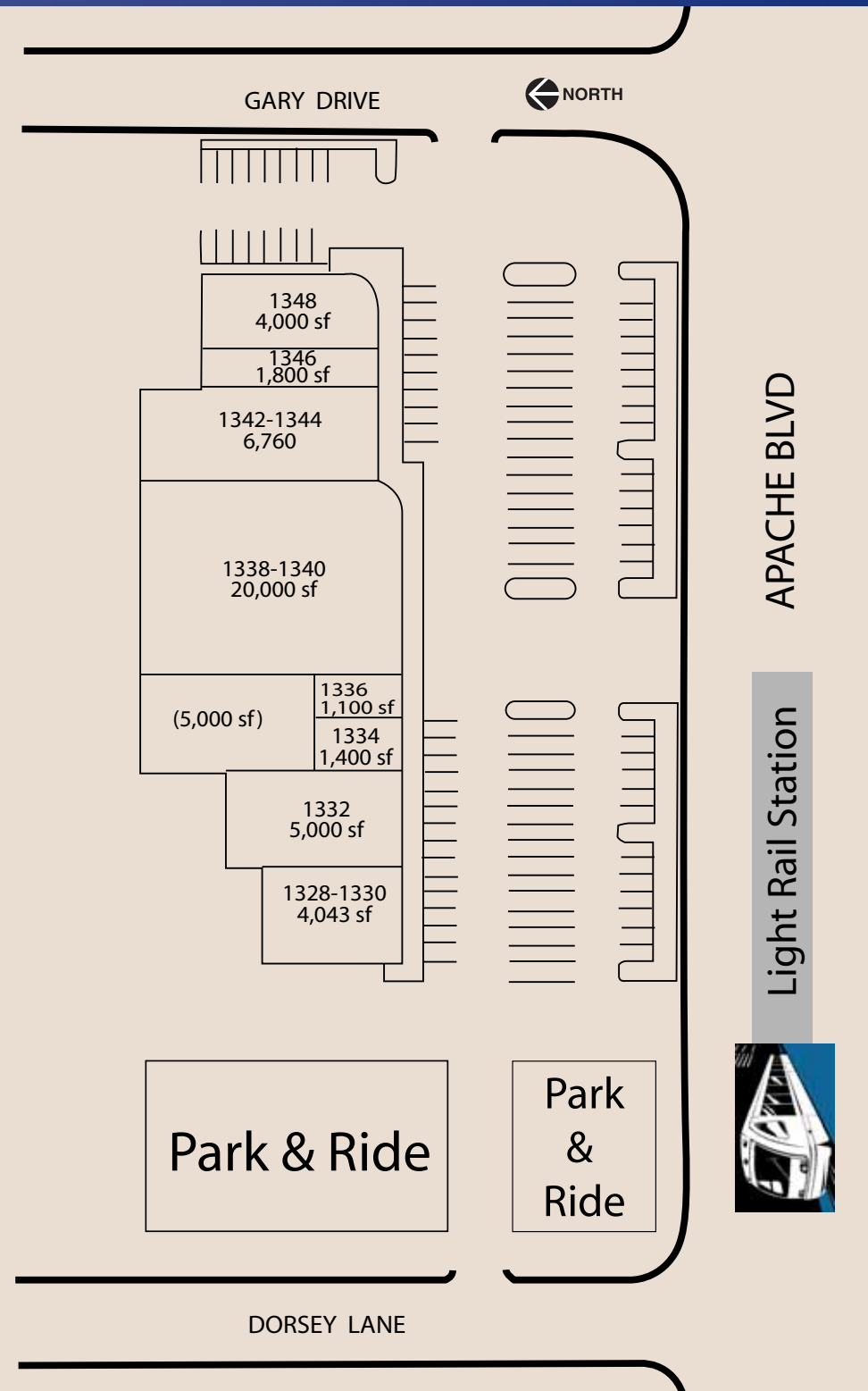
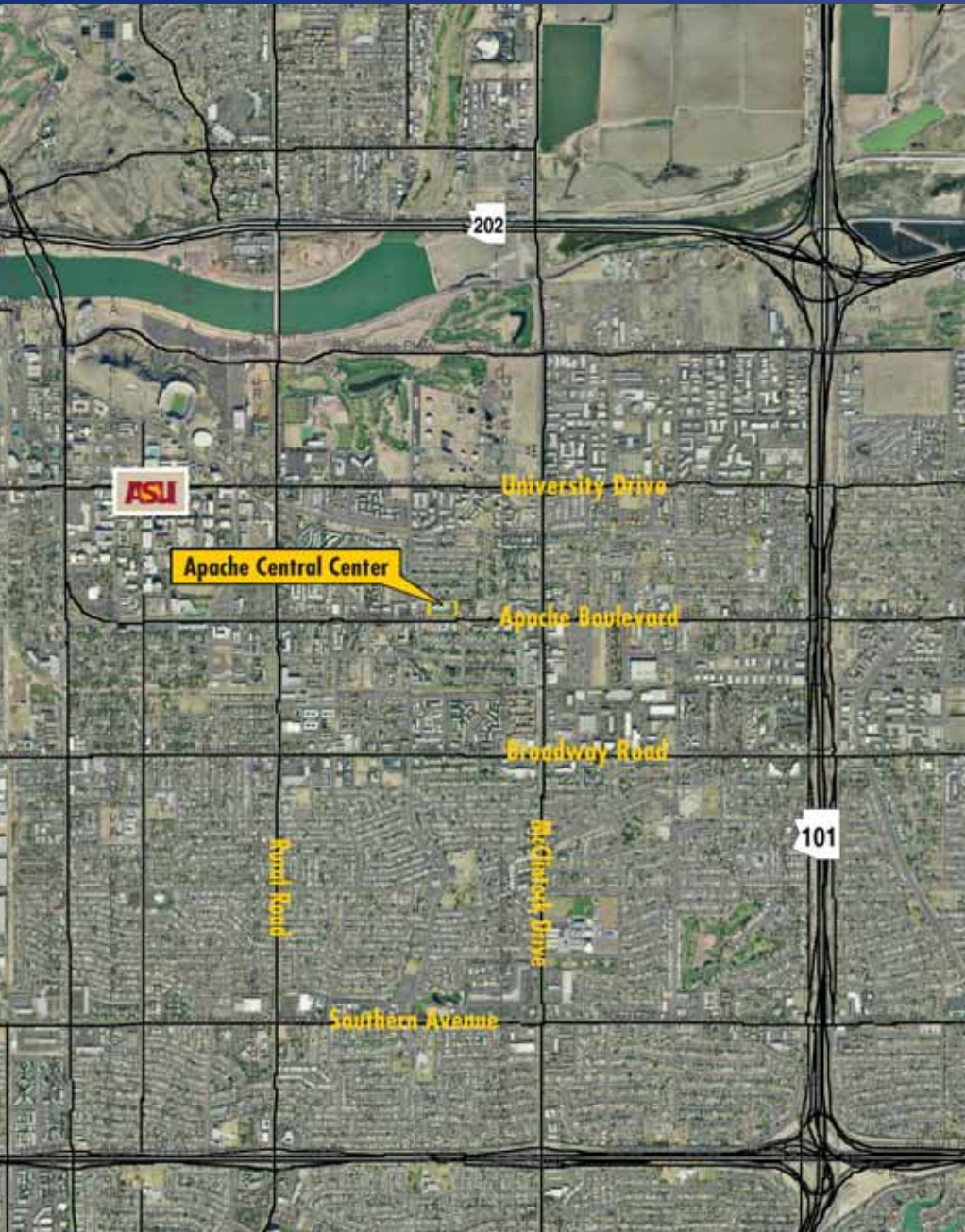
For leasing plans, availability and rates, visit us at:

www.pollackinvestments.com/apache



Michael A. Pollack
 REAL ESTATE INVESTMENTS

The information contained herein has been obtained from sources we deem reliable. While we have no reason to doubt its accuracy, we do not guarantee it.



* Square foot indications are approximate

1136 West Baseline Road • Mesa, Arizona 85210 • (480) 888-0888 • fax (480) 814-7741 • www.pollackinvestments.com

For further information, please contact:
 Michael A. Pollack
 (480) 888-0888

Michael A. Pollack
REAL ESTATE INVESTMENTS

