

POLLACK PLAZA

C H A N D L E R • A R I Z O N A



3002 North Arizona Avenue • Chandler, Arizona 85225

For further information, please contact:

Michael A. Pollack
(480) 888-0888

Size: 73,187 Square Feet

Spaces Starting From: 729 SF

Zoning: C-2, City of Chandler

Traffic Counts: Corner Total: 66,600
(2007: City of Chandler)
Arizona Avenue: 39,500 cars/day • Elliot Road: 27,100 cars/day

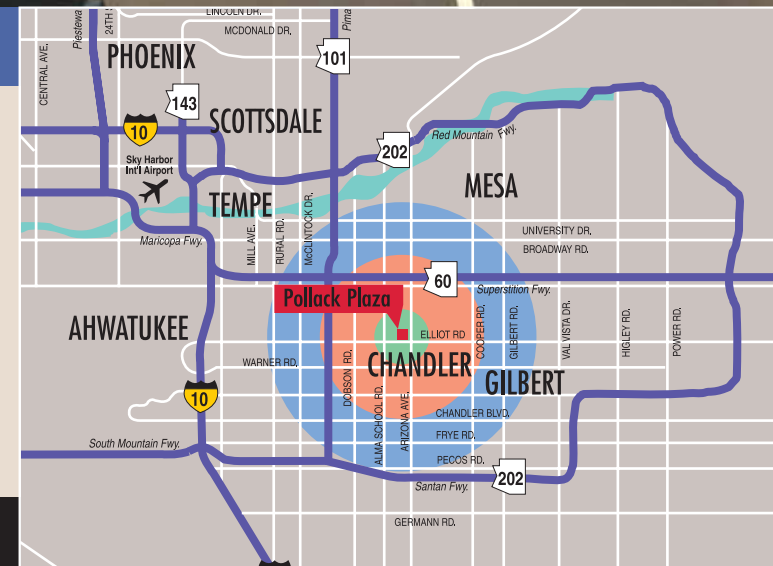
Demographics:

(2007: Demographicsnow.com)

	1 mile radius	3 mile radius	5 mile radius
Population:	12,633	157,882	439,918
Households:	4,740	55,069	152,321
Median Household Income:	\$ 61,035	\$ 67,581	\$ 63,762
Median Age:	32.0	31.9	31.2

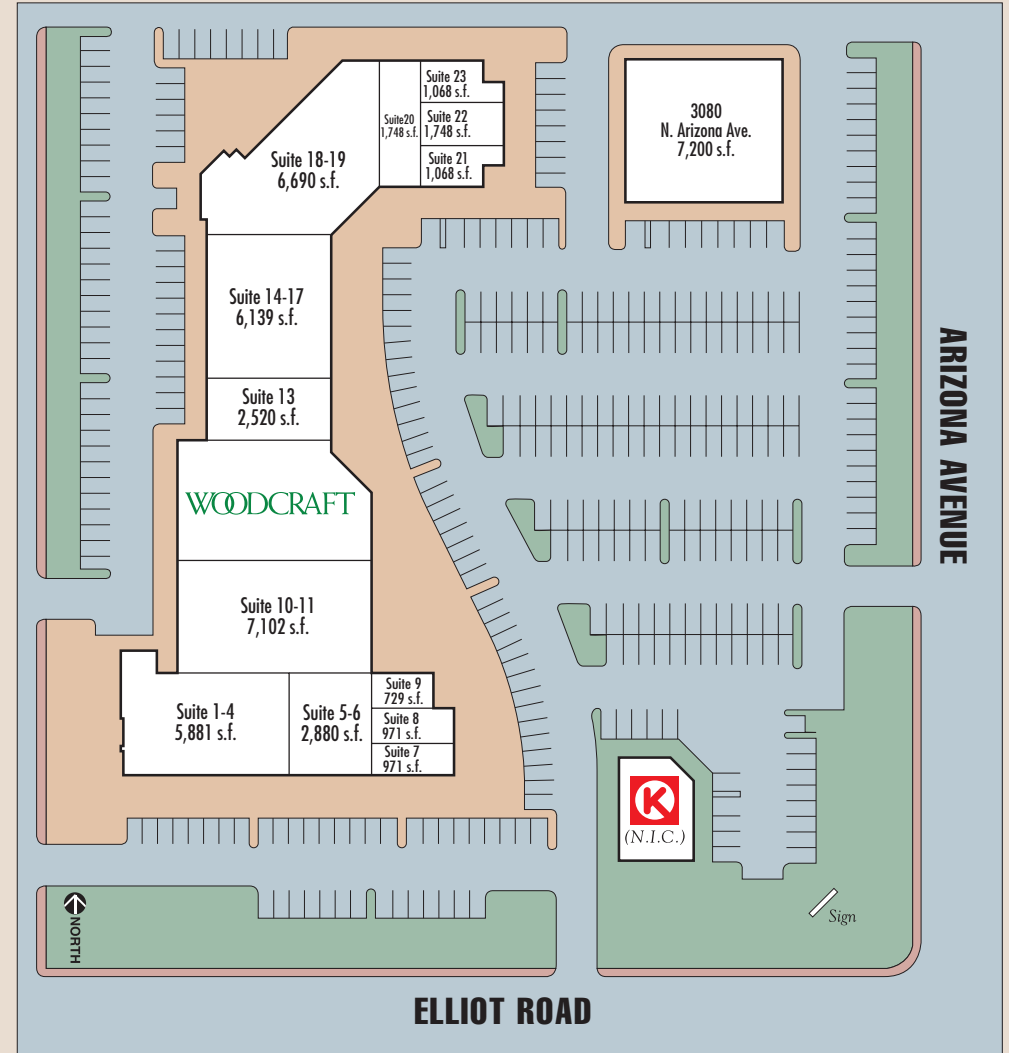
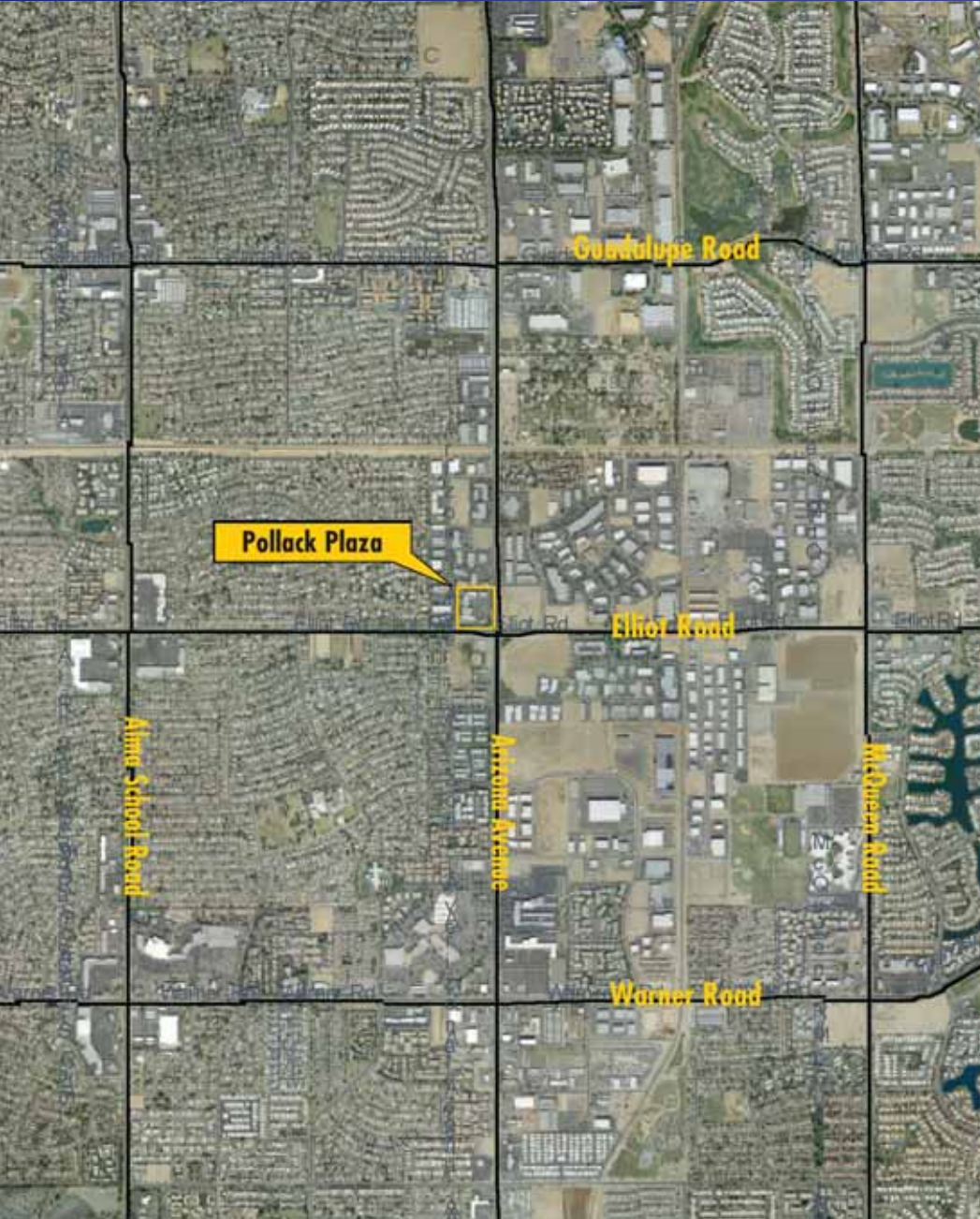
For leasing plans, availability and rates, visit us at:

www.pollackinvestments.com/pollackplaza



The information contained herein has been obtained from sources we deem reliable. While we have no reason to doubt its accuracy, we do not guarantee it.

Michael A. Pollack
REAL ESTATE INVESTMENTS



For further information, please contact:
 Michael A. Pollack
 (480) 888-0888

Michael A. Pollack
REAL ESTATE INVESTMENTS

* Square foot indications are approximate

1136 West Baseline Road • Mesa, Arizona 85210 • (480) 888-0888 • fax (480) 814-7741 • www.pollackinvestments.com